

## OUR VISION

*Every infant, toddler, and young child in North Carolina will grow up within nurturing relationships and supportive environments that provide the basis for emotional, cognitive, and social capacities necessary for healthy future development.*



## NCIMHA BY THE NUMBERS

- MEMBERS: 238
- FINANCIAL STABILITY:
  - TOTAL REVENUE: \$17,541
  - TOTAL EXPENSES: \$4,465
  - ENDING BALANCE: \$47,526
- LEADERSHIP
  - VOLUNTEER BOARD: 17
  - PAID STAFF: 0

## CONFERENCE HIGHLIGHTS

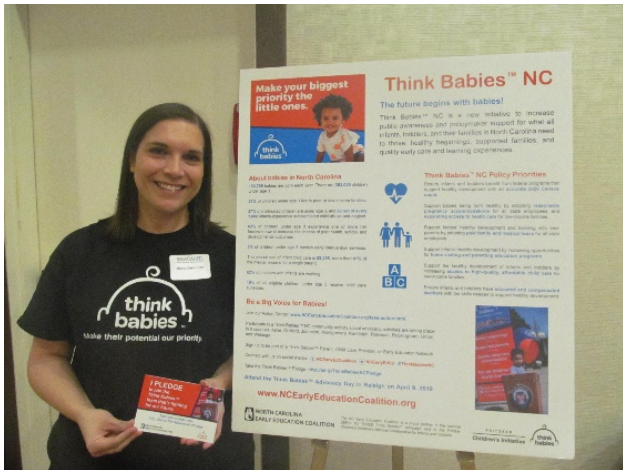
- **THEME:** Beyond ACES Awareness: Preventing Toxic Stress and Promoting Resilience and Equity for All
- **KEYNOTE:** Chandra Ghosh Ippen, PhD, expert on trauma and diversity-informed practice
- **CONFERENCE SUCCESSES:**
  - ATTENDEES: 276
  - POSTERS: 16 posters from universities and community organizations
  - PRESENTATIONS: keynote + 10 break outs
  - HONORARY LIFETIME MEMBERSHIP: awarded to Melissa Johnson, PhD
  - SCHOLARSHIPS: Thanks to generous donations, 30 scholarships awarded to foster parents, early childhood educators, poster presenters, and students





## WORKFORCE DEVELOPMENT HIGHLIGHTS

- Our Workforce Development (WFD) committee continued to promote and expand the integration of the Early Childhood Social-Emotional Competencies
- NCIMHA members presented at the national, state, and local levels. Highlights include:
  - A ZERO TO THREE annual national conference presentation on assuring a competent infant/early childhood mental health workforce
  - An NC Home Visiting Summit presentation on early childhood mental health and the Social-Emotional Competencies
- The NC Institute of Medicine reconvened the Mental Health, Social, and Emotional Needs of Young Children and their Families Task Force members to review progress on recommendations, discuss ongoing work and challenges, and identify new opportunities and priorities for action. NCIMHA Past President Chris Payne provided a detailed review of the WFD committee's ongoing efforts to infuse the Social-Emotional Competencies into workforce training.
- UNC Charlotte's Early Childhood Mental Health graduate certificate program, rooted in the Competencies, continued to enroll students.



## ADVOCACY & PARTNERSHIPS

Board members partnered with the following state and regional initiatives to provide leadership and action for young children:

- Think Babies leadership team
- Early Childhood Action Plan
- Pathways to Grade Level Reading
- Essentials of Early Childhood
- ABCD (Assuring Better Child health and Development) Advisory Committee with Community Care of NC (CCNC)
- North Carolina Partnership for Children board of directors
- Family Support Network of the Triangle advisory board
- NC Child fellowship

